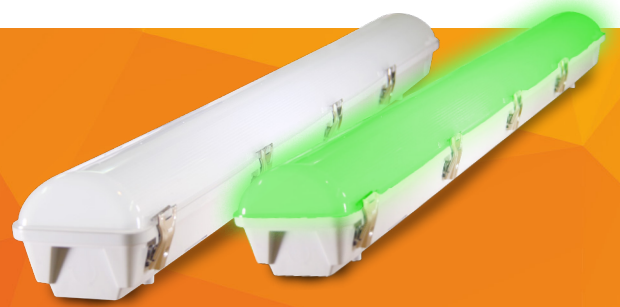


[ENDURO]

WEATHERPROOF LED BATTEN



5
YEAR
PRODUCT
WARRANTY

S
SENSE
TECHNOLOGY

E
EMERGENCY
FUNCTION

IP
65
INGRESS
PROTECTION

IK
08
IMPACT
PROTECTION

Description

The [ENDURO] is built with premium-grade materials, making it one of the most durable weatherproof LED battens on the market. The [ENDURO] features a large terminal block, heavy duty stainless steel clips and multiple knockouts for side and rear cable entry to ensure smooth installation.



Key Features

- High efficiency up to 125lm/W
- Durable polycarbonate body and diffuser with stainless steel clips
- Screw point for optional vandal-proof installation
- GRP, Emergency and sensor options available
- Green (532nm) LED output option available



The [ENDURO]^F automatically switches to its AS2293-tested emergency function when the mains power supply fails. Featuring over 150 minutes of emergency operation supported by high capacity and long lifetime LiFePo4 batteries. Rated C0 = C32, C90 = C32 across all models.

Features:

- 150mins Emergency operation
- Test button for self-test function
- High capacity
- LiFePo4 batteries
- 3 year battery warranty

EMERGENCY SPECIFICATION

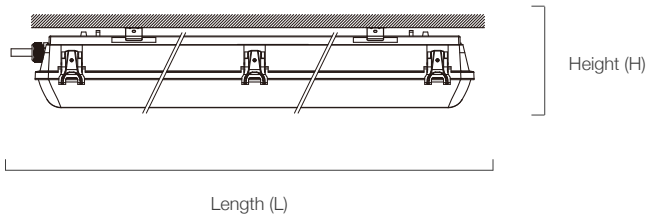
Emergency LED Power	4W
Output Current	32-110mA
Battery Charging Ambient Temp.	-20°C ~ +60°C
Battery Model	LiFePo4 YH11-403



Technical Specifications

Rated Life	≥50,000 hours	Operating Temperature	-20°C to +45°C (+ 40°C Em)
Body	Polycarbonate	Input Voltage	200-264 VAC ~ 50/60Hz
Installation	Surface mounted, Suspension	IP Rating	IP65
Beam Angle	120°	Connection	Terminal block
Power Factor	>0.95	Net Weight	1.1kg (600mm) (1.3kg Em) 1.9kg (1600mm) (2.2kg Em)
CRI	>83		

Dimensional Drawing



Wattage	L	H	W
20W	600	108	120
36W	1160	108	120

Unit = mm

Product Data

Part Number	Power	Lumen Output	CCT
BE-2-20C120	20W	2500lm	4000K
BE-2-20D120	20W	2600lm	5700K
BE-4-36C120	36W	4400lm	4000K
BE-4-36D120	36W	4400lm	5700K
BE-2-20G120	20W	2500lm	Green

Green (532nm) LED Chip version available
 Sensor option available, add '-S' to model code.
 Emergency option available, add '-E' to model code.
 Dimmable option available, add '-D' to model code.
 GRP option available, add '-P' to model code
 eg. BE-4-36D120-EPSP (Emergency, GRP, Sensor, Dimmable)

GRP Specifications

Body	GRP
Diffuser	Polycarbonate
IK Rating	IK10
IP Rating	IP65
Weight	1.6kg (600mm) 3.0kg (1200mm)

Sensor Settings

Note: Default factory settings are in bold

Frequency	5.8GHz ±75 MHz
Detection Zone Max (DxH)	16m x 15m
Detection Sensitivity	10%/ 50%/75%/ 100%
Hold Time	5s/30s/ 90s/ 3min/ 20min /30min
Daylight Sensor	2 lux/5 lux/10 lux/25 lux/50 lux/ Disable
Stand-by Period	0s/5s/10min/30min/1h/+ ∞
Stand-by Dimming	10%/20%/ 30% /50%